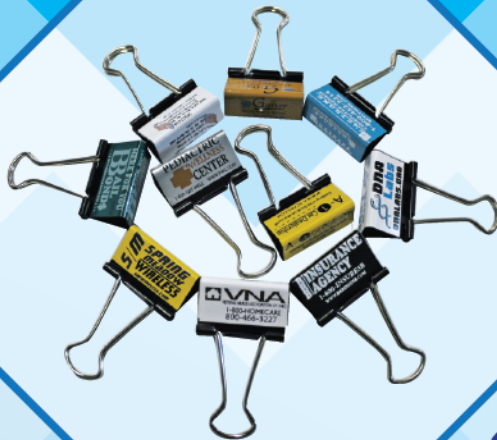


SASCO USA



ASI 84498 | PPAI 573467 | SAGE 69555

Dash Plaques

ITEM: DP2X3

Size: 2" X 3"

Made in USA 

Imprint size: 1.75" x 2.75"

QTY:	25	50	100	250	500
Price:	\$2.10	\$1.86	\$1.76	\$1.61	\$1.52 (c)

ITEM: DP3X4

Size: 3" X 4"

Imprint size: 2.75" x 3.75"

QTY:	25	50	100	250	500
Price:	\$3.15	\$2.79	\$2.64	\$2.42	\$2.28 (c)

FREE SET-UP CHARGE



Sublimation process increases visibility, with full color imprint and bleeds at no additional cost.

Adhesive backing optional at no additional charge.

Metal Plates

FREE SET-UP CHARGE

ITEM: MP5X7

Size: 5" X 7"

Made in USA 

Imprint size: 4.75" x 6.75"

QTY:	25	50	100	250	500
Price:	\$4.20	\$3.72	\$3.48	\$3.22	\$3.04 (c)

ITEM: MP7X9

Size: 7" X 9"

Imprint size: 6.75" x 8.75"

QTY:	25	50	100	250	500
Price:	\$6.30	\$5.58	\$5.22	\$4.83	\$4.56 (c)



Inset (Moon)

Regular (Square)

Round (Radius)

Adhesive backing optional at no additional charge.

Sublimation process increases visibility, with full color imprint and bleeds at no additional cost.

See page 10 for artwork requirements & details

Plaques

Standard Cherry & Standard Black
 Pricing Includes: *Full color imprint, assembly, & solid wood plaques with sublimated plates.*
 Production Time: 5 days



Sublimation process increases visibility, with full color imprint and bleeds at no additional cost.

Size:	Imprint Area:	QTY:	1	6	12	24	48	96	144
5" x 7"	4" x 6"	Price:	11.10	8.22	7.82	6.80	5.91	5.14	4.98
7" x 9"	6" x 8"	Price:	17.06	16.58	14.42	12.54	10.90	9.48	8.24
8" x 10"	7" x 9"	Price:	19.72	18.70	17.00	15.45	14.04	12.76	11.60
9" x 12"	8" x 11"	Price:	24.02	21.62	19.46	17.51	15.76	14.18	12.77 (7c)

Available Plaque Options:

Piano Finish Cherry & Piano Finish Black
 Pricing Includes: *Full color imprint and assembly. & solid wood plaques with sublimated plates.*
 Production Time: 5 days



Sublimation process increases visibility, with full color imprint and bleeds at no additional cost.

Size:	Imprint Area:	QTY:	1	6	12	24	48	96	144
5" x 7"	4" x 6"	Price:	15.54	13.99	12.59	10.33	9.20	8.99	7.99
7" x 9"	6" x 8"	Price:	18.65	16.78	15.10	13.59	12.23	11.00	9.91
8" x 10"	7" x 9"	Price:	21.45	19.30	17.37	15.63	14.07	12.66	11.40
9" x 12"	8" x 11"	Price:	29.12	26.47	24.06	21.87	19.88	18.07	16.42 (7c)

Plaques are key holed on the back with one side for vertical and one side for horizontal hanging.

See page 10 for artwork requirements & details

Personalized Boat Fenders

Made in USA 

Pricing Includes: Full color imprint on front panel.

Imprint Area: FEN20 - 5.5" x 13",

FEN22 - 6" X 13", FEN26- 8" x 15"

Set-up Charge: \$25.00 (G)

Production Time: 15-20 working days

Packaging: Individually bagged and boxed



ITEM # FEN _____
size color

FEN20BLUE (example)

ITEM	1,000
FEN20	\$22.89 (c)
FEN22	\$31.71 (c)
FEN26	\$41.23 (c)



Colors Available:

White, Black, Blue, Green, Red, Navy, and Yellow.

We also offer any custom PMS color.



<u>Boat Size</u>	<u>Fender Size</u>
15' to 25'	5.5" x 20"
20' to 30'	6.6" x 22"
30' to 40'	8.5" x 26"

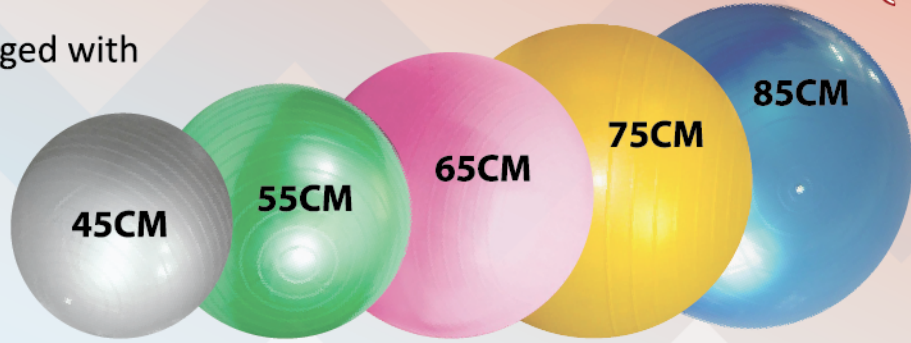
See page 10 for artwork requirements & details

Stock Color Exercise Balls

Production Time: 15-20 working days from approval of artwork.

Packaging: Individually bagged with plug kit.

Made in USA 



EXERCISE BALLS

Custom Colors Available

Set-up \$40.00 (g)

45CM - 17.7165"

250 - \$16.54

500 - \$15.44

55CM - 21.6535"

250 - \$18.20

500 - \$17.09

65CM - 25.5906"

250 - \$19.30

500 - \$18.20

75CM - 29.5276"

250 - \$24.81

500 - \$23.71

85CM - 33.4646"

250 - \$29.22

500 - \$28.92

ITEM # EXB
 ball color
 size

EXB65Blue (example)

ACTUAL SIZE BEFORE PRODUCTION

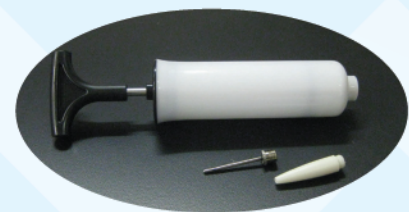


ASI 84498
PPAI 573467
SAGE 69555

Imprint area 1.18" x 3.45"

This imprint expands during production up to 250 % original size. Unlimited spot colors at no additional charge!

Optional Hand Pump



\$1.25 (g.)

Styles subject to change

Stock Exercise Ball Colors:



See page 10 for artwork requirements & details

Custom Round Buttons

2 1/4" Round Button

This product is made of two piece metal with protective Mylar cover. Safety Pin backing. Full color imprint included. No set-up charges. Low quantities and rush available.



Production Time: 5 days

Rush Time: 1 day

Imprint Size: 2.25" x 2.25"

***Price includes:** Full color imprint, No set-up charges

Imprint Color: Any color

Packaging: Bagged & Boxed.



ITEM: BUTTON	1	10	25	50	100	250	500	1000
Price	\$2.52	\$1.96	\$1.75	\$0.98	\$0.70	\$0.42	\$0.33	&0.29 (6R2T)

See page 10 for artwork requirements & details

Spinner Signs



Pricing Includes: Two sided, two color (matching reversed) imprint on 6 mil. coroplast

Spinner Sign Size: 48" x 16"

Production Time: 10 working days

Rush Service Available for small quantities



YELLOW SPINNER
ITEM # SPNY

QTY	1	6	12
PRICE	\$57	\$53	\$50 (c.)

Add \$10 (g) for a different copy on reverse side
Add \$30 (g) for full color, two sided graphics

Spinner signs are perfect to promote any specials, sales, or new events your business is conducting. Our spinners are made from sturdy 6 mil. coroplast, and are available in white or yellow (PMS 122)



WHITE SPINNER
ITEM # SPNW



Call for information on custom shapes & sizes.

See page 10 for artwork requirements & details

Angle Iron Arrow Kits

Pricing Includes: Angle iron frame, coroplast insert (two sided), two color vinyl imprint.

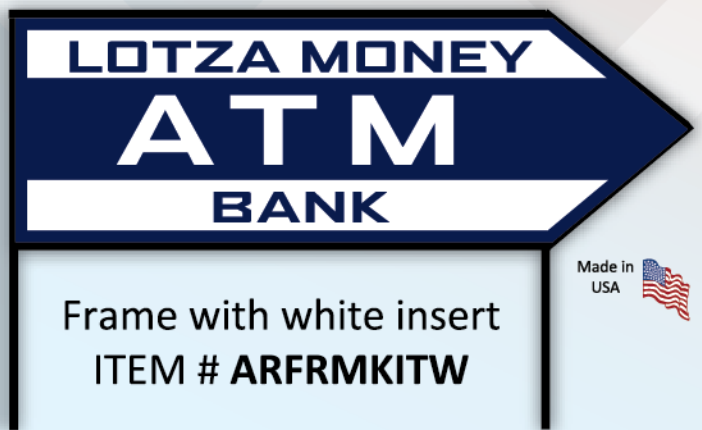
Frame Size: 48" x 38"

Corroplast Insert Size: 47.75" x 15.75"

Production Time: 10 - 15 working days

QTY	1	6	12
PRICE	\$98	\$94	\$90 (c.)

Our angle iron arrow kits have a simple and durable design. The frames are designed with easy slide in tabs so the signs are easily interchangeable for all of your advertising needs. Call for information on custom shapes & sizes.



Arrow Frame Only

Arrow Insert Only



QTY	1	6	12
PRICE	\$70	\$65	\$60 (c.)

QTY	1	6	12
PRICE	\$19	\$17	\$15 (c.)

See page 10 for artwork requirements & details

Requirements & Details

F.O.B. All products are shipped from Ohio

SAMPLES: Random samples are available at EQP pricing. Pre-production samples are \$100. Virtual samples are free.

MADE IN USA: Although our products are molded in the USA, plugs, clips, valves, plug pulls, and wooden plaques, associated with our Exercise Balls and Plaques are not made in the USA.

SAFETY: None of our products are intended for children under 2 years of age. We would be happy to e-mail or fax detailed inflation instructions for our exercise balls. Our exercise balls have been tested for up to 350 pounds.

Over/Under Run Policy: All orders are subject to a five percent over/under run and will be shipped and billed accordingly.

Order Changes: We reserve the right to invoice for any expenses incurred at time of corrections or cancellations.

Trademark Usage: All copy or other material submitted by the customer will be considered in full compliance with all applicable laws regarding trademark, service mark, copyright, right of privacy, patent or other protection. We reserve the right to request proof of authorization to use trademark logos.

Shipping:

Please call for a shipping quote on large orders. They are often shipped via truck. Additional "inside delivery" charges may apply on palletted orders. See handling charges for distributor or 3rd party shipping and residential delivery.

Weights:

45cm ball 1.5#, 55cm ball 2.5#, 65cm ball 2.75#, 75cm ball 3#, 85cm ball 5.25#.

Handling Charges:

Split Shipment: Add \$3.00 net each.

Drop Shipment: Add \$3.00 net each.

Fullfillment available, please call for a quote.

Distributor or third party shipping: on orders under \$100 and random samples a \$6.00 charge will be applied. There may be an additional shipping charge for residential delivery.

Terms: Net 30 days upon credit approval. We accept Visa, Master Card and Discover.

Pricing: We try to hold our prices per calendar year. We reserve the right to increase pricing due to raw material fluxuation.

Artwork Requirements

ALL SASCO USA PRODUCTS

- e-mail artwork to sascousaline@aol.com
- Please convert all text to curves or outlines
- We discourage font size less than 8pt
- Vector artwork should be created in Adobe Illustrator® 12 or later
- Preferred artwork format is Adobe Illustrator® eps, and pdf.
- Full color artwork should be 300dpi
- Orders requiring more than 15 minutes of art time will be charged a minimum of \$55 per hour.
- Please see below for specific product requirements
- We will advise, on your order acknowledgement, if we feel your artwork will not produce optimal results.



Artwork Requirements



BOAT FENDERS

Our imprinting process is unique. We place the imprint into the molds during production, making the imprint part of the product. We accept full color CMYK artwork and vector art. The highest quality full color image will produce a high quality imprint. We offer PMS color matches for products and imprints but do not guarantee exact matches.



ANTI-BURST EXERCISE BALLS

Our imprinting process is unique. We place the imprint into the molds during production, making the imprint part of the product. For exercise/sitting balls the original size of the imprint is 1.18" X 3.45" and will expand with the ball up to 250% original size. Vector, spot color artwork works best with this process. Because of the expansion during production, CMYK process art and gradients are discouraged and will pixel. Contrasting imprint colors to the ball will produce optimal results. We offer unlimited spot colors at no additional charge. We offer PMS color matches for product and imprints but do not guarantee exact matches.



BUTTONS

Buttons are made of two piece metal with protective Mylar cover. Please provide a bleed for up to 2.6" diameter. Full color imprint included and no set-up charges. Low quantities and rush available. We offer PMS color matches for imprints but do not guarantee exact matches.



DASH PLAQUES & PLAQUES

Dash plaques & Plaques are sublimated aluminum on your options of gold, white, or silver. Full color imprint included with no set-up charges. Please provided a bleed of 1/8" over plate size. CMYK images are acceptable over 300 dpi. We offer PMS color matches for imprints, but do not guarantee exact matches. Adhesive backing comes standard on both dash plaques and plaques unless otherwise specified. Plate corners come standard square, additional options of radius or inset cut with and extra cost of \$0.25 per unit.



SPINNERS & ANGLE IRON ARROW FRAMES

Spinners are decorated with vinyl on 6 mil. coroplast that is very durable, reducing weather induced damage. Spinners are available in white or yellow coroplast (PMS 122). Vector, spot color artwork works best with this product. CMYK process art and gradients are discouraged and will pixel. We offer unlimited spot colors at no additional charge. We also offer PMS color matches for imprints but do not guarantee exact matches. Please allow a .25" bleed if the imprint is supposed to overprint. Visit sascousaline.com to download the template for this product. Angle Iron Arrow Frames are made here in Ohio. Our frames are durable and weather proof with easy slide in tabs for convenience. These tabs are also to keep the spinners secure in the frame. Angle iron frame kits will arrive already assembled to ensure no damage to the spinner sign during the shipping process unless otherwise specified by the customer.

ASI 84498 | PPAI 573467 | SAGE 69555



www.sascousaline.com